



**Matrix Metering Ltd**  
**Electricity Meter Manufacturers**  
Whitegate, White Lund Trading Estate  
Lancaster, Lancashire, England. LA3 3BT  
Tel 01524 841909 Fax 01524 847009  
e mail sales@matrixmetering.com

## Series 800 – Card Operated Prepayment Meter Data Sheet

### Construction Characteristics:

Number of conductors: 2 wires  
Dielectric Strength: 4KV  
Type of register mechanism: L C D display  
Display Features : Backlit 16 Character / 7 segment display  
Size of Characters 8.8mm high 4.9 mm wide (max')  
Minimum register: 0.1 KWh  
Maximum register: 99 999.9 KWh  
Constant: 1500 impulse / kWh  
Weight: 1.9 Kg  
Temperature Range - 20c to +60c  
Size 196 mm high 152 mm wide 106 mm deep



### Operational Characteristics:

Class of precision: Class 2  
Nominal Tension: 220 - 240 V  
Minimum Current to operate: 41 mA  
Nominal Current: 20-80 Amp  
Maximum Current: 80 Amp  
Nominal Frequency: 50/60 Hz  
Power range for functioning: 200/250 V

### Electricity losses :

Nominal current loss in the coil : 0  
Nominal power loss in the coil : 0  
Total power loss in the coil (current + power) : 0

### Card Reader

Horizontal 30 mm slot, magnetic head single track, motor driven card acceptor unit with card entry sensing locators  
Customer friendly card operation, card reader accepts full card, a important factor in known historical security of prepaid electricity metering

### Memory Back Up

Each S800 has a battery back up in case of loss of power –  
Pcb Mounted 3 pin Bobbin design,  
Creating high safety standards  
3.6volts ½ AA Inorganic Lithium Battery  
Battery Life Expectancy 10 years  
Operating Range – 55c to +85c  
High Energy Density up to 650wh/kg  
Capacity loss of less than 1% per year



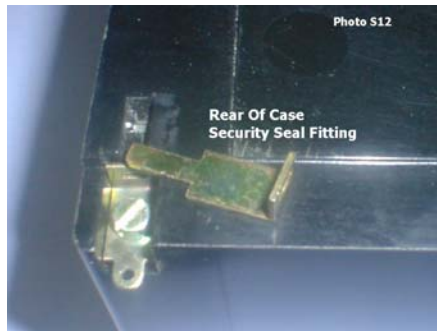
### Case Construction

Heavy-duty robust case, with integral terminal block, high quality phenolic moulding to a maximum thickness of 6.2mm, the case construction and design has very high insulating properties, and is suitable for tropical conditions as non –



**Matrix Metering Ltd**  
**Electricity Meter Manufacturers**  
Whitegate, White Lund Trading Estate  
Lancaster, Lancashire, England. LA3 3BT  
Tel 01524 841909 Fax 01524 847009  
e mail sales@matrixmetering.com

hygroscopic and comply with the flame test given in ISO EN 5685 Appendix B (clause 5.6)



Security tamperproof design, with security seal fittings, rear of case access only

#### Terminal Block

Nickel plated brass terminals, are fitted for main terminals, The terminal cover is of a tamperproof construction and design, with a security lip fitting into the main meter case, and star constructed fixing for sealing with a 6.5mm screw head fitting

#### Glass Front viewing panel

99mm wide x 77mm high, held in place with two corner clips and adhesive compound approved within the companies strict environmental policy



Complies with EN61010 installation category 11 Pollution degree 2

#### Conformities

EN ISO 1036

The Series 800 complies with IEC 1036 section 4.4.2

Operation over the voltage range complies with IEC 1036 section 4.4.2.1 with permissible error as given in IEC 1036 table 14.

For voltage dips and short interruptions the module complies with IEC 1036 section 4.4.2.2 and tested according to IEC 1036 section 5.4.2.1

Power Burden less than 2VA

#### EMC

Full compliance meeting generic standard EN50091-2 and immunity standard EN50082-2 for industrial environments

#### Safety Standard

Complies with EN61010 installation category 11 Pollution degree 2

#### RoHS & WEE Directives

Compliance with both European directives

